



Hewlett Packard
Enterprise

TO TRANSFORM OR TO BE TRANSFORMED

Nicola Moussourou

Central Eastern Europe Middle East & Africa HR Director
Sofia, 18 October 2019

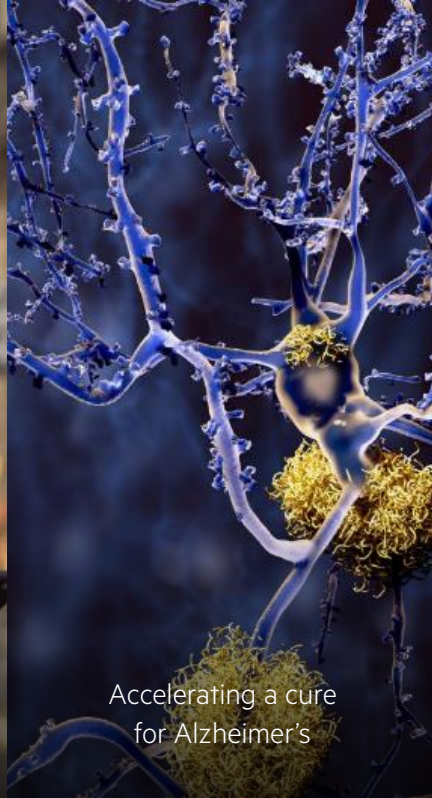
ADVANCING THE WAY PEOPLE LIVE AND WORK



Redefining
fan engagement



Enabling seamless experiences



Accelerating a cure
for Alzheimer's



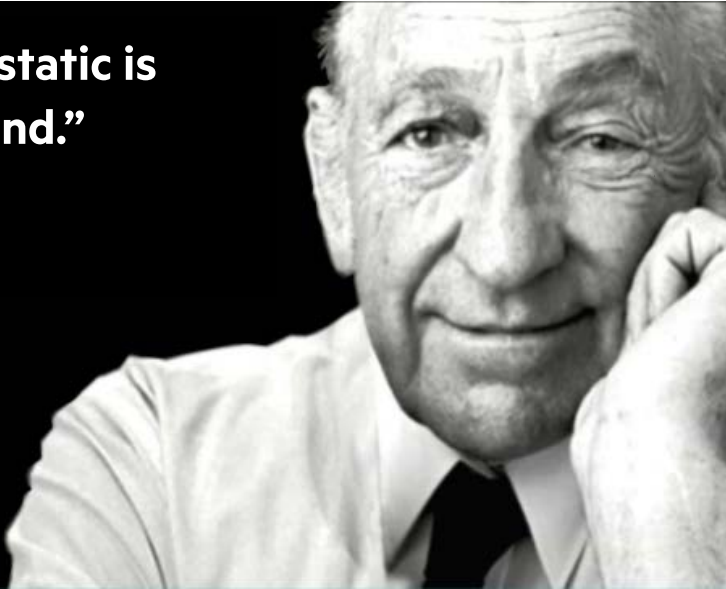
Accelerating the
Mission to Mars



TRANSFORMATION DNA @ HPE

“To remain static is to lose ground.”

David Packard



- Change is a business imperative that while disruptive will ultimately elevate performance
- Ability to absorb a high level of change while displaying minimal disruptive behaviour, maintaining engagement and creating results



ACCELERATING HPE STRATEGY

Innovations

Composable Infrastructure
Industry-standard compute
Secure compute experience

All-Flash Storage
In-memory analytics
Memory-Driven Computing

Mobile-First Wireless
Edge Computing
Location-based Services

Recent acquisitions



Hybrid Cloud

AI & Advanced Analytics

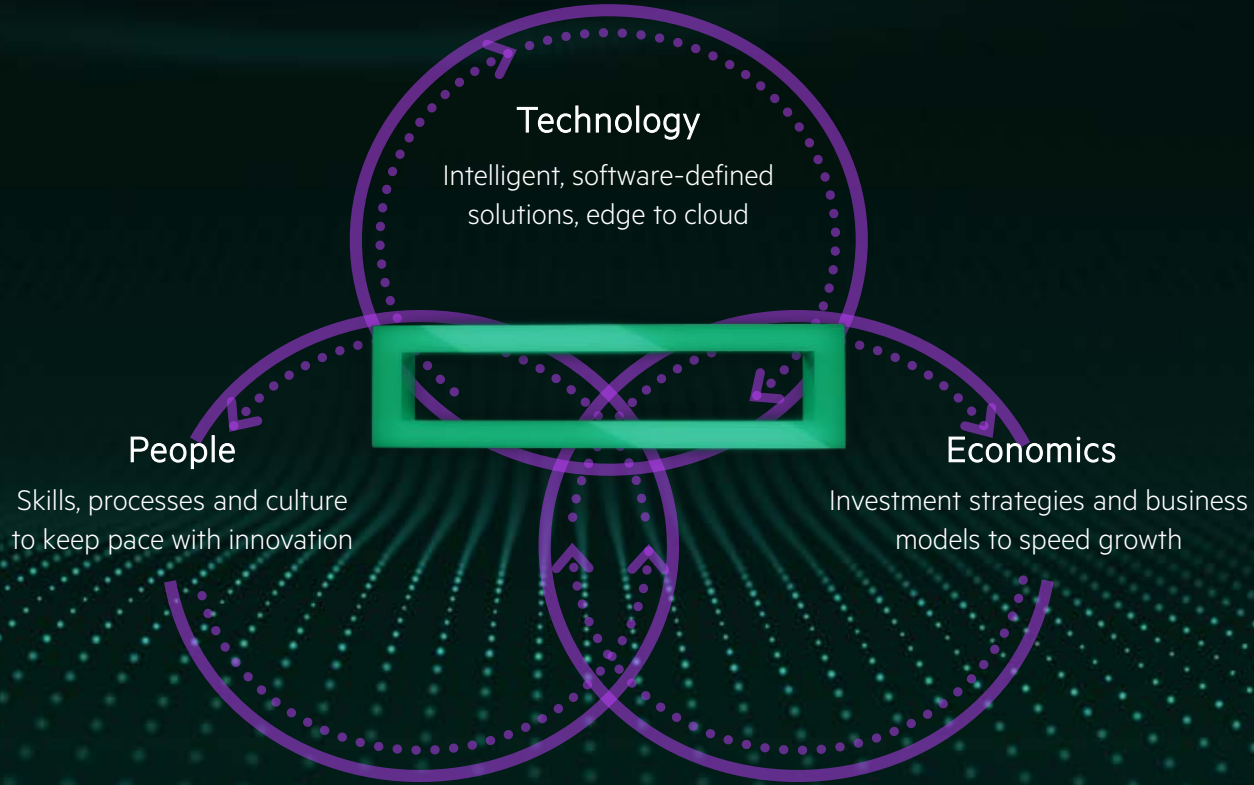
Redefining experiences at the Edge

Expanded Partnerships



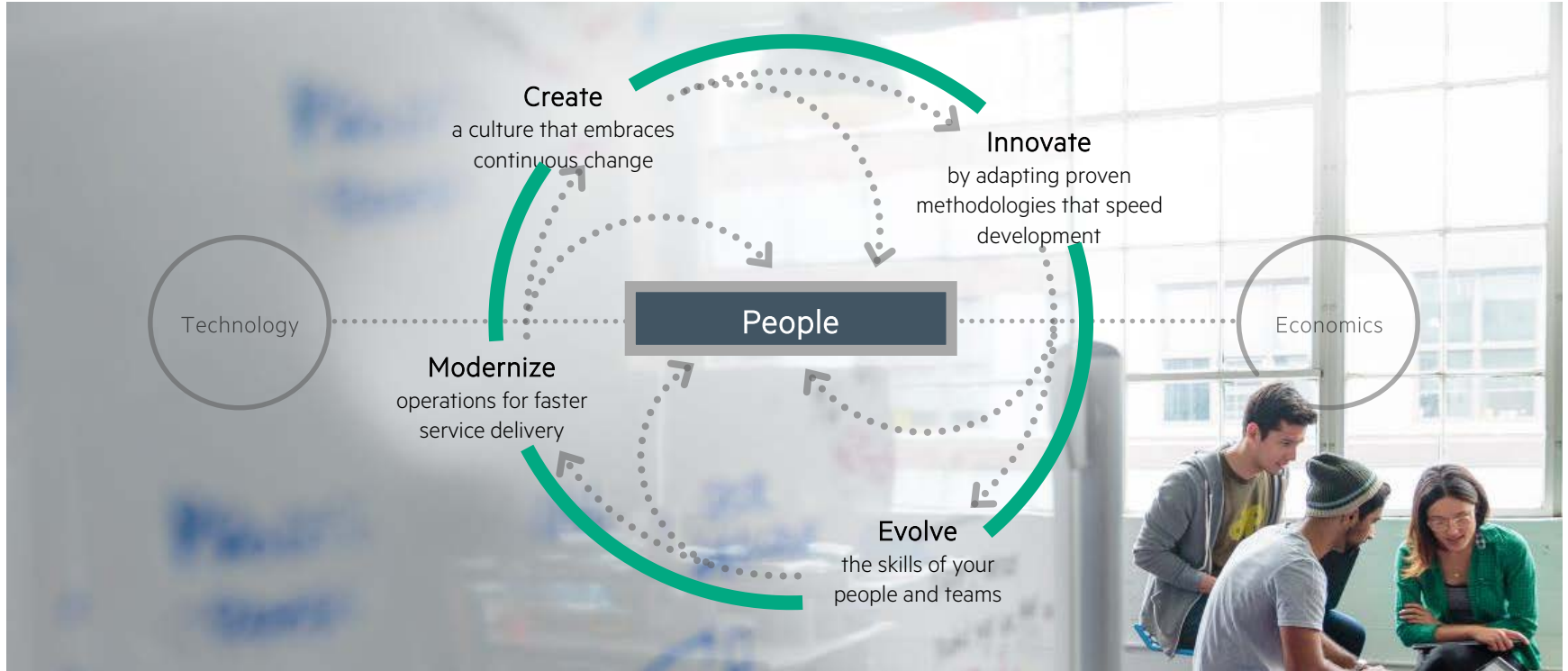
HPE's acquisition of CRAY is subject to customary closing conditions and regulatory review and is expected to close by HPE's first quarter of fiscal 2020

ACCELERATING THE DIGITAL TRANSFORMATION AGENDA



CULTURE OF GROWTH AND INNOVATION

People at center of everything we do



HPE CULTURE & EXPERIENCE: INSIDE THE ELEMENT



Purpose

WHY WE EXIST

We bring together the smartest minds to create breakthrough technology solutions that advance the way people live and work.



Strategy

WHAT WE DO

- Make Hybrid IT simple
- Power the Intelligent Edge
- Expertise to make it happen



People

WHO WE ARE

We are a team of doers, dreamers and visionaries who make it happen.

Values

HOW WE WORK



HEWLETT PACKARD ENTERPRISE TODAY



59,000+ employees **36,000** **\$16.9M**

HPE Gives Program
volunteer hours

Matter to a Million
Program Loans

32% Employees are women

25% Executives are women

643,000 Employee combined
years of service

>500,000

Non-profit organizations benefitted
from HPE employee volunteer hours

37

country teams participating to create local
community impact
on a global scale

>229,037

Borrowers benefitted since 2013 across 60
countries

Investment program with non-profit, micro-
lending organization Kiva lifting
entrepreneurs
out of poverty.

1. Regular employees (does not include temporary or contingent workers), at March 2019
2. The Hewlett Packard Enterprise Foundation has funded over \$15.1M to Matter to a Million Program since 2014



HR Drives & Accelerates Transformation

THANK YOU

